

Goal: End Homelessness in Southeast Kansas by Making Homelessness Rare, Brief, and non-Recurring¹

How: Comprehensive Coordination of Community Resources

- Responsive and Proactive Homeless Outreach
- Co-locate Supportive Service Organizations
- Rental Housing for Qualified Populations
- Physical Healthcare
- Addiction Recovery Support
- Data Collection and Analysis for program evaluation and strategic planning
- Discharge Planning from Hospitalization and Incarceration
- Employment Training and Coaching
- Peer Support Groups
- Behavioral Healthcare
- Community Education and Engagement

Team-Based Outreach and Support Model to engage households in a patient-centered medical home.

- Multidisciplinary care teams, each with a “panel” of clients
 - Establish individualized Housing and Health Plans
 - Provide evidence-based whole-person care
 - Use data and client input to continuously improve service delivery

Who: Multiple Coordinated Organizations – including the Continuum of Care

- Pittsburg Housing Authority
- Pittsburg Police Department
- Community Mental Health Center of Crawford County
- Safehouse Crisis Center
- Pittsburg State University
- Kansas Works
- Catholic Charities
- Crawford County Sheriff
- Recovery and Diversion Courts
- SEK-CAP
- Greenbush
- K-State Extension

Where: This approach requires a facility, “The Station,” to accomplish the following:

- Triage and Care Coordination
- Co-locate Supportive Service Organizations
- Storage for Personal Items
- Rental Housing
- Education, Fellowship, Group Support
- Access to Basic Hygiene Facilities
- Employment Training and Coaching

The proposed location on North Joplin Street in Pittsburg, Kansas is within walking distance to physical and behavioral health care at CHC/SEK, the Addiction Treatment Center and other supports at CMHCCC, Crawford County Public Health, and employment opportunities.

¹This goal is aligned with the United States Interagency Council on Homelessness.

Theory of Change

Strategies	Increase Social Capital Bridging	Increase Access to Physical and Behavioral Healthcare	Increase Educational Attainment	Increase skills to gain employment
Activities	<ul style="list-style-type: none"> • Co-locate adult education organizations; • Host Social Work Practicum students; • Provide clear and consistent volunteer opportunities for community members; • Host a variety of support group activities; • Host a variety of cultural enrichment group activities. 	<ul style="list-style-type: none"> • Include Physical and Behavioral healthcare in individual housing plans; • Provide on-site healthcare for acute needs; • Provide regular education on managing chronic healthcare conditions; • Streamline access to addiction treatment. 	<ul style="list-style-type: none"> • Host Pittsburg State University's Center for Reading; • Include OnTrack educational modules in individual housing plans; • Provide 1 on 1 support for Kansas Works educational models; • Provide training on computer literacy. 	<ul style="list-style-type: none"> • Include resume building and interview coaching in individual housing plans; • Provide paid work opportunities; • Provide commercial kitchen work experience and training; • Provide opportunities to practice social etiquette; • Provide employment references for program participants.
Short Term Outcomes	Increased Prosocial Relationships	Increased Health Literacy	Increased Adult Literacy	Increased Interpersonal Skills
Long term outcomes	Increased Resource Access	Improved Health Outcomes	Increased Employment Opportunities	Increase Employment and Earnings
Overarching Goals	Increased Economic Mobility and/or Stability; Increased Self-Reliance			



Figure 1: Proposed location for The Station, in green

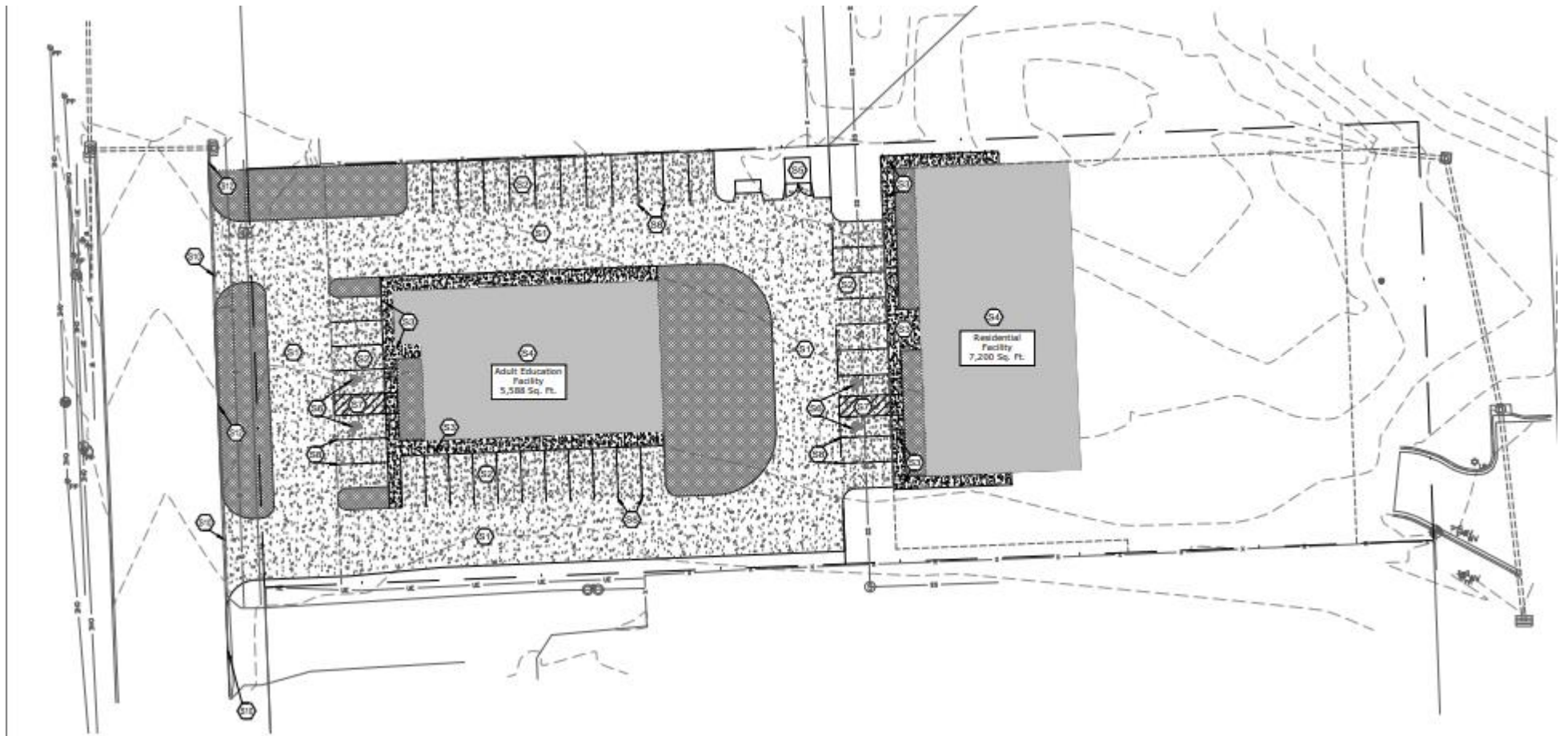


Figure 2: Site Plan for The Station

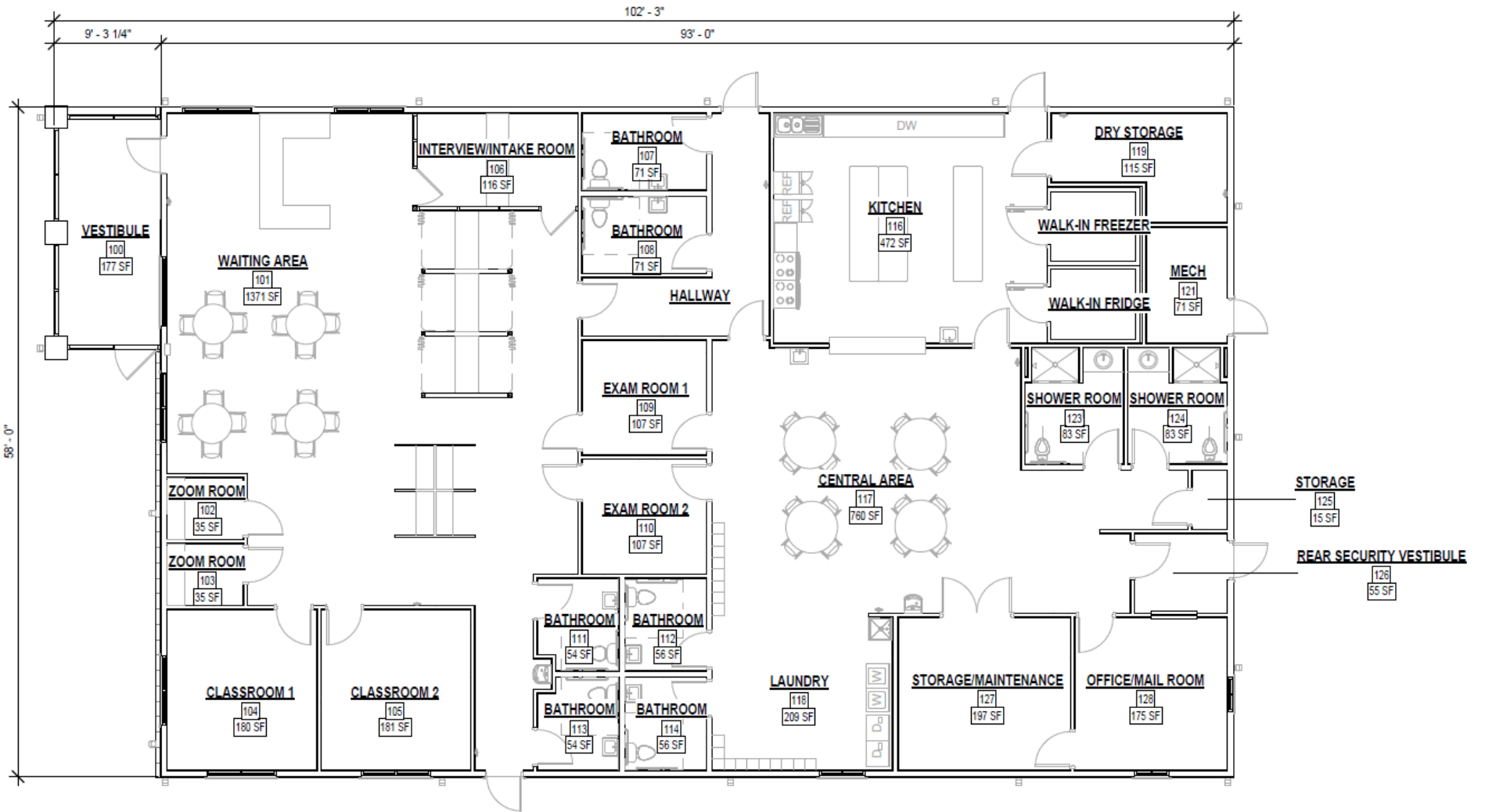


Figure3: Adult Education Center at The Station



Figure 4:: The Residences at The Station